

# Solid State Logic

O X F O R D • E N G L A N D

# *Live*

**SOLSA V4.11.18**  
**Update Instructions**

Contents

<b>Introduction</b>	3
Prerequisites	3
SOLSA Overview	3
<b>Installation</b>	4
System Requirements	4
Supported Operating Systems	4
Hardware	4
Download	4
Installing SOLSA	5
Completing The Installation	6
Starting The Application For The First Time	7
<b>Help</b>	7
<b>Troubleshooting</b>	
SOLSA Slow to Start or Does Not Start at All	9
<b>Software Licence Agreement</b>	11
Licence	<b>Error! Bookmark not defined.</b>
Restrictions	<b>Error! Bookmark not defined.</b>
Limitation of Liability	<b>Error! Bookmark not defined.</b>
Indemnity	<b>Error! Bookmark not defined.</b>
General	<b>Error! Bookmark not defined.</b>

### Introduction

This document describes the software installation procedure required to update your PC to this latest release of SOLSA software.

### Prerequisites

Please ensure that you have the following items before attempting any part of the upgrade:

SOLSA Update Instructions (This Document)
SSL_Live_PC_V4.11.18.exe (a free download from the SSL website)
A solidstatelogic.com account (visit the SSL website ( <a href="https://solidstatelogic.com">solidstatelogic.com</a> ) to create one for free)
An active internet connection during installation
Appropriate privileges to install software on your PC

### SOLSA Overview

The SSL Off/On-Line Setup Application, or SOLSA, allows creation and editing of Live console Showfiles on your laptop, desktop or tablet PC.

Almost anything that can be done on a console can be manipulated and configured 'offline' when access to a console is not possible. SOLSA also includes the ability to remotely control a console, giving real time access to all audio processing parameters. Connection is via Ethernet or, with the addition of a wireless router or access point, via Wi-Fi. Instructions on how to connect SOLSA to a console are described in the SSL Live Help System:

[livehelp.solidstatelogic.com/Help/SetupRemote.html](https://livehelp.solidstatelogic.com/Help/SetupRemote.html).

### Windows 7 Support

Microsoft [ended support](#) for Windows 7 in January 2020. V4.10.17 was the last version of SOLSA that will be officially supported by SSL on Windows 7. SOLSA will continue to be supported on Windows 8.1 64-bit and Windows 10 64-bit.

### Installation

#### System Requirements

SOLSA is a high-performance piece of software and requires a powerful computer. Requirements for SOLSA to run correctly on your computer are stated below.

**Please note:** Both SSL and Audinate software programs install Dante services required for operation. In some cases when older application versions have previously been installed, Windows can fail to keep track of associated background Dante services, and cannot correctly uninstall/update these. Should you encounter any such issues during installation, manually uninstall all Audinate and SSL software programs and Dante services, restart the computer before installing current versions of each required application.

#### Supported Operating Systems

Windows 8 64-bit, Windows 8.1 64-bit or Windows 10 64-bit operating system.

**Important note:** Installations of the Windows operating systems listed above may be run on Intel-based Apple Mac computers using a multi-boot utility such as Boot Camp or virtual environments such as Parallels or VMWare Fusion.

The hardware requirements listed below still apply to these environments.

In particular, please ensure that the Windows virtual machine is assigned at least 16GB of RAM.

#### Hardware

- Recommended minimum of 8GB RAM
  - 16GB RAM recommended if running under a virtual machine on Mac
- 2.6GHz Dual core CPU or higher
- 200MB hard disk space
- Minimum screen resolution of 1280 x 1024 recommended

#### Download

To download SOLSA visit the SSL website ([solidstatelogic.com/live/I500/solsa](https://solidstatelogic.com/live/I500/solsa)).

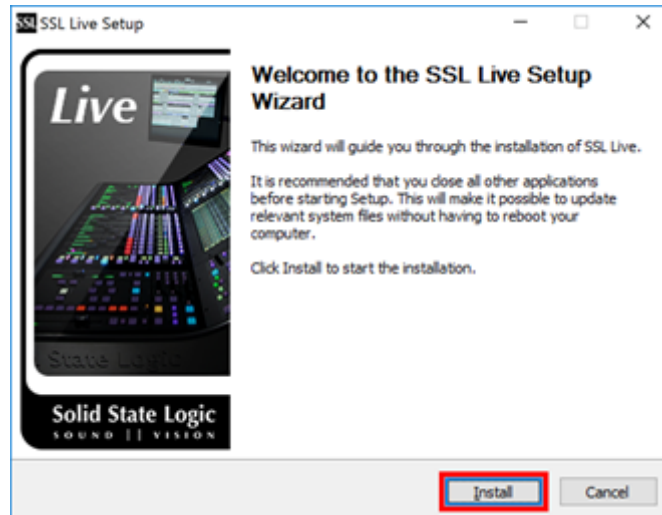
Once the download is complete locate the .zip file on your hard drive and unzip the file. Read these Update Instructions carefully before attempting to run the installation.

### Installing SOLSA

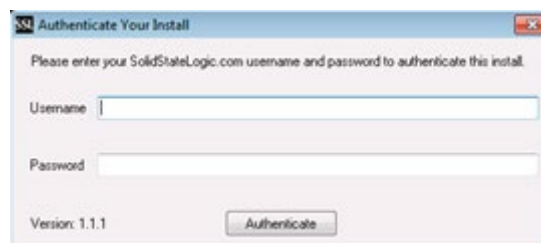
Double-click on the .exe file to start the installation.

If prompted, click **Yes** to allow the program to make changes to your PC.

Read and follow the on-screen instructions carefully. When you are ready to start the installation, click on the **Install** button:



If this is the first time SOLSA has been installed on your PC, you will now be asked to provide your solidstatellogic.com username and password to authenticate the install. Updates to SOLSA do not require this step.

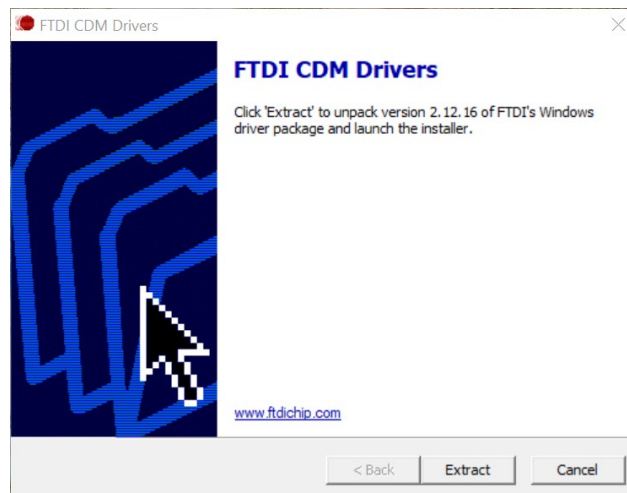


**Note:** If you do not have a solidstatellogic.com account, please visit [store.solidstatellogic.com/user/register](https://store.solidstatellogic.com/user/register). Follow the on-screen instructions to create your free account and, once completed, enter the details into the installer's authentication pop-up.

Click the **Authenticate** button when finished to proceed with the installation.

**Important Note:** You must have an active internet connection to complete this process.

You will then see the following window referring to FTDI CDM Drivers:

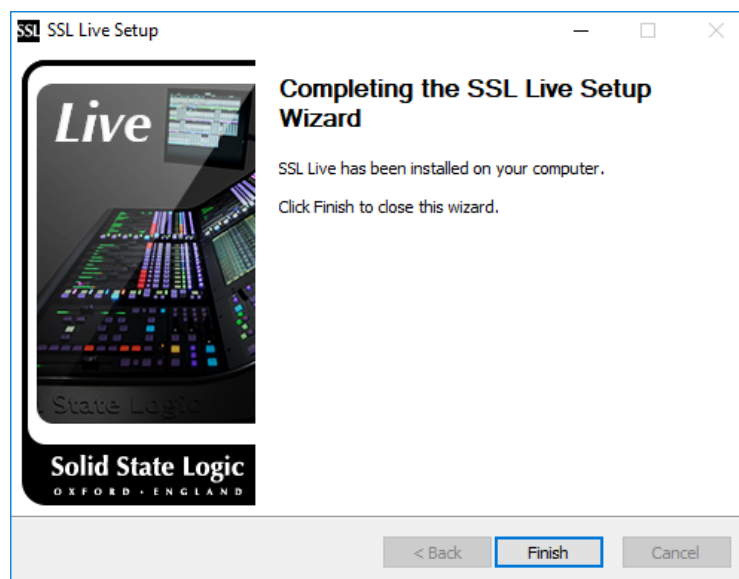


Click **Extract** and follow the on screen instructions.

### Completing The Installation

You will be asked if you wish to create a shortcut to the SOLSA software on your desktop, click **Yes** if you wish to do so.

Now click **Finish**.



You may be prompted to restart your PC following the SOLSA install.

### Starting The Application For The First Time

If a desktop shortcut was created during installation, you may start the software from this shortcut (named "SSL Live SOLSA").

Alternatively, the software can be accessed from the **Start Menu** or by searching programs and files for "SSL Live".

If presented with a Windows User Account Control prompt, click **Yes** to proceed:

SOLSA will now launch and a Solid State Logic splash screen and progress bar will appear. The initial launch of the software can take some time. The Solid State Logic progress bar updates regularly during this time.

### Help

**Note:** The Help App and Console Help system have not been updated in this release. The Online Help system ([livehelp.solidstatellogic.com](http://livehelp.solidstatellogic.com)) contains instructions on the new features.

### New Features

Details to be found in the V4.11.18 Feature Notes

- Manual Discovery of Consoles for Remote Control Over VPN Connections

Features from V4.11.13

- L-ISA Control
- Sigma Control
- Generic OSC Controller
- New Sourcerer™ Primary Source Isolator
- Updated Bus Compressor effect
- New Blitzer™ compressor effects module
- FFT Analyser Available on Parametric EQ Effects Modules
- New SSL Factory FX Presets
- Fast Setup
- Support for TeamViewer Remote Connections
- Copy Path Pan settings to Bus Sends
- Signal Switcher - Bidirectional Auto-Switching
- Added Talkback inject to Stems and Masters
- New Filtering Options for Path Presets
- Connect TaCo to SOLSA
- TaCo for Mac
- External / Default Solo Source Always Active Option
- Control of Shure ANI22 and ANI4IN Audio Network Interfaces

#### User Key Additions

- Channel View User Keys
- User Key Assignment Location
- New User Key Functions

#### Event Manager Improvements

- Automation Source & Destination
- Fader Position Source & Destination
- Source, Destination & Event Disable
- Source & Event State Indication
- New Showfile & Automation Destinations
- New Source & Destination Path Functions

#### Automation Improvements

- Expandable Automation Scene List
- New Output Actions Fire at Scene End Option
- Scene Lock Improvement
- Hybrid Automation Mode



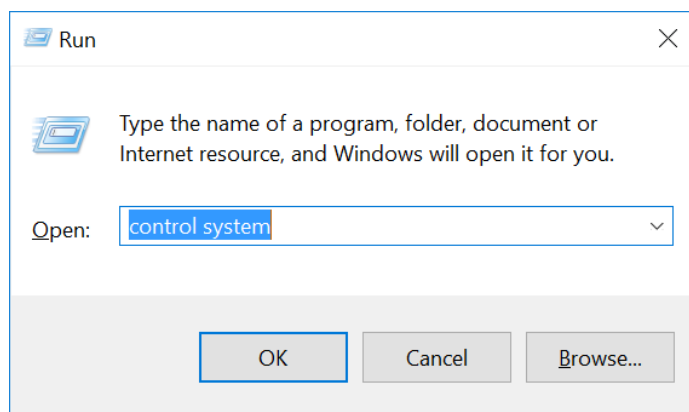
### Troubleshooting

#### SOLSA Slow to Start or Does Not Start at All

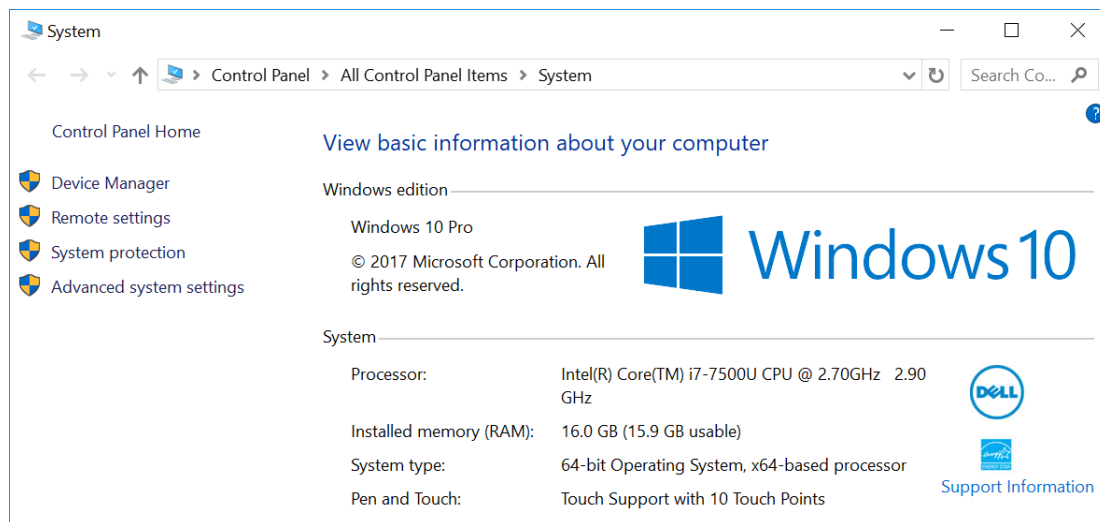
Ensure you have met the minimum system requirements listed at the beginning of this document. A 64-bit version of Windows and 8GB RAM is required to run SOLSA. If you are running SOLSA under a Windows virtual machine (e.g. Parallels or VMware Fusion) please ensure you have allocated sufficient resources to the virtual machine.

#### Check Your Windows System Specifications

In Windows, open the Run dialog (Windows key + R), type "control system" (or right-click on the Windows start icon and select "System" if running Windows 10) and click **OK**.



This will open the System window, in which information about your computer can be found. Ensure that your system information meets the minimum recommended requirements for SOLSA. Below is an example of what you should see on a Windows 10 installation:



### Set RAM Allocation In Parallels

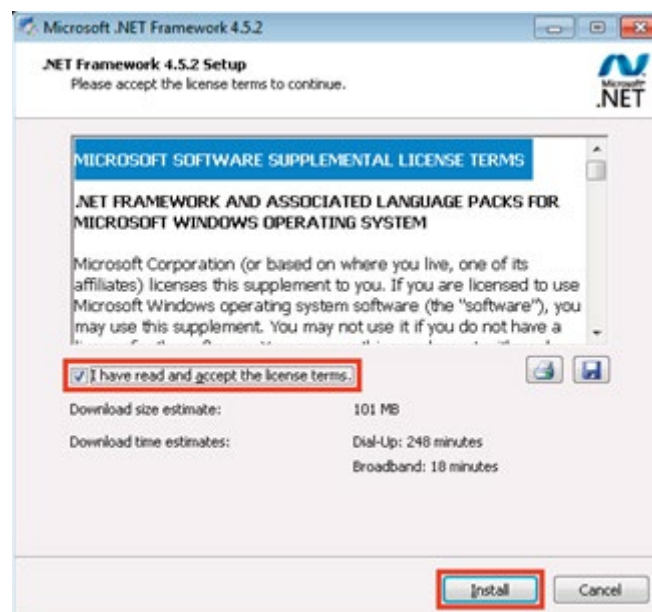
- Shut down the Windows virtual machine
- From within Parallels, choose Virtual Machine > Configure > General
- Move the Memory slider to 8GB
- Restart Windows

### Set RAM Allocation In VMware Fusion

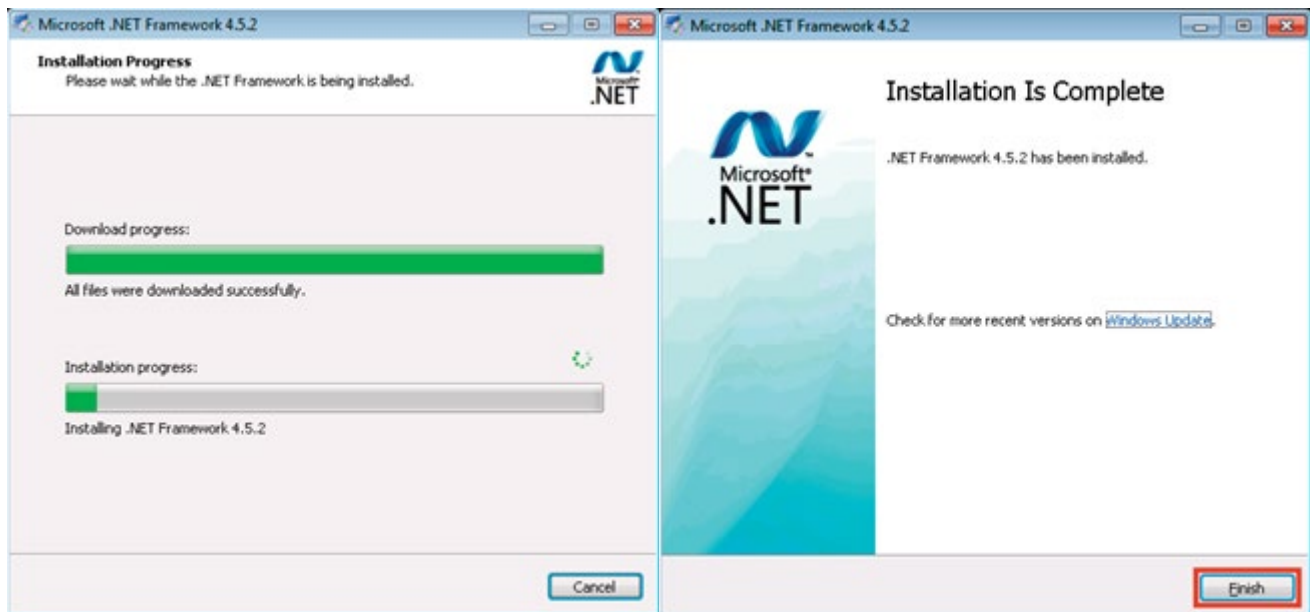
- In VMware Fusion, select Window > Virtual Machine Library from the menu bar
- Select the Windows virtual machine and click Settings
- Navigate to System Settings > Processors & Memory
- Use the slider to allocate a minimum of 8GB RAM

### Microsoft .NET

You may need to download and install Microsoft .NET Framework 4.5.2.

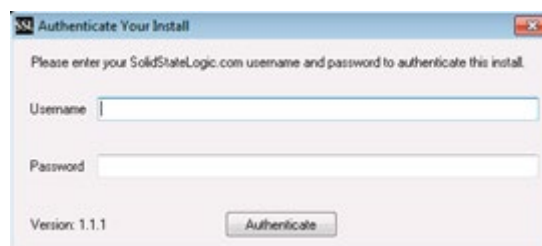


Ensure you have an Internet connection to download the required files. It can take some time to download and complete the installation.



Click **Finish** once the installation is complete.

If this is the first time SOLSA has been installed on your PC, you will now be asked to provide your solidstatelogic.com username and password to authenticate the install. Updates to SOLSA do not require this step.



**Note:** If you do not already have a solidstatelogic.com account, please visit [www.solidstatelogic.com](http://www.solidstatelogic.com) and click on the person symbol the top-right corner of the home page and click Profile. Follow the on-screen instructions to create your free account and, once completed, enter the same details into the installer's authentication pop-up.

Click the **Authenticate** button when finished to proceed with the installation.

**Important Note:** You must have an active Internet connection to complete this process.

### Software Licence Agreement

By using this Solid State Logic product and the software within it you agree to be bound by the terms of the relevant **End User Licence Agreement** (EULA), a copy of which can be found at <https://www.solidstatelogic.com/legal>. You agree to be bound by the terms of the EULA by installing, copying, or using the software.

# Solid State Logic

O X F O R D • E N G L A N D

Visit SSL at:

[www.solidstatelogic.com](http://www.solidstatelogic.com)

© Solid State Logic

All rights reserved under International and Pan-American Copyright Conventions

SSL®, Solid State Logic® and Tempest® are ® registered trademarks of Solid State Logic.

Live L100™, Live L200™, Live L300™, Live L500™, L500 Plus™, L550 Plus™, L350 Plus™, Blacklight™,  
Network I/O™ are ™ trademarks of Solid State Logic.

Dante™ and Audinate™ are trademarks of Audinate Pty Ltd.

All other product names and trademarks are the property of their respective owners  
and are hereby acknowledged.

No part of this publication may be reproduced in any form or by any means, whether mechanical  
or electronic, without the written permission of

Solid State Logic, Oxford, OX5 1RU, England

As research and development is a continual process, Solid State Logic reserves the  
right to change the features and specifications described herein without notice or obligation.

Solid State Logic cannot be held responsible for any loss or damage arising directly  
or indirectly from any error or omission in this manual.

**PLEASE READ ALL INSTRUCTIONS, PAY SPECIAL HEED TO SAFETY WARNINGS.**

E&OE

Feb 2021